



POTATO RESOURCE GUIDE

Discover trusted insight and proven agronomic support for your potato acres.

This guide brings together our top recommendations, product solutions, and regionally relevant strategies — all in one place.

Use the page numbers to the right to jump straight to the sections you need. From start to finish, it's built to deliver an answer for every acre.

INDEX

- 2** Potato Crop Care Product Portfolio
- 6** Elite Disease Protection
- 8** Herbicide/Desiccant Products
- 10** Field Market Updates
 - 10** Columbia Plateau
 - 11** Mountain West
- 14** Early Post Emergence Program
- 16** Growth Chart



Innvictis Crop Care® strives to provide an answer for every potato acre by offering products at every stage of the growing cycle from burndown through harvest.

PRODUCT	AI	MOA	DESCRIPTION	COMPARABLE PRODUCT	USE RATE	BURNDOWN	PREPLANT	PREEMERGE	POSTEMERGE
HERBICIDES									
AVATAR™	Clethodim: 2 lb/gal	1: ACC Inhibitor (Acetyl CoA Carboxylase)	Most commonly used AI for post emergence grass herbicide.	Select® 2 EC	6 - 16 oz/A	X	X	X	X
AVATAR™ S2™	Clethodim: 2 lb/gal	1: ACC Inhibitor (Acetyl CoA Carboxylase)	The only premium 2 lb/gal per gallon proprietary formulation clethodim based herbicide on the market.	Unique to Innvictis Crop Care	6 - 16 oz/A	X	X	X	X
DERIVE® 4L	Metribuzin: 3.8 lb/gal	5: Photosynthesis Inhibitor Site A	Metribuzin containing group 5 herbicide for use on a broad spectrum of grass and broadleaf weeds and can be used pre and post-emergence for foliar and soil applications.	Metricor™ 4F	½ - 2 pts/A¹			X	X
DERIVE® 75 DF	Metribuzin: 75%	5: Photosynthesis Inhibitor Site A	Metribuzin containing group 5 herbicide for use on a broad spectrum of grass and broadleaf weeds and can be used pre and post-emergence for foliar and soil applications.	Metricor™ 4F	⅓ - 1 ⅓ lb/A¹			X	X
DEVOUR®*	Paraquat: 3 lb/gal	22: Photosystem I Electron Diverter	Non selective, broad spectrum burndown herbicide.	Gramoxone®	0.4 - 1.3 pts/A		X	X	
GALVAN®	Metribuzin: 1.25 lb/gal R-Metolachlor: 5.25 lb/gal	5: Photosynthesis Inhibitor Site A 15: Very Long Chain Fatty Acid Inhibitor	Two modes of action containing residual for managing tough broadleaf and grass weeds.	Boundary® 6.5 EC	1.5 - 2.9 pts/A¹			X	X
GALVAN® XRT	Metribuzin: 0.91 lb/gal S-metolachlor: 3.83 lb/gal	5: Photosynthesis Inhibitor Site A 15: Very Long Chain Fatty Acid Inhibitor	A selective herbicide for control of broadleaf and sedge weeds. Metribuzin and S-metolachlor delivers extended preemergence control and is excellent in a herbicide program that overlaps residuals. Includes our proprietary technology XRT extended residual technology.	Unique to Innvictis Crop Care	1.5 - 4 pts/A¹			X	X
PAVILION 3.3 EC HERBICIDE	Pendimethalin: 3.3 lb/gal	3: Microtubule Assembly Inhibitor	A pendimethalin-based herbicide providing long-lasting, dependable, broad-spectrum residual weed control.	Prowl® 3.3 EC	1.8 - 3.6 pts/A¹			X	X
PAVILION H2O	Pendimethalin: 3.8 lb/gal	3: Microtubule Assembly Inhibitor	Herbicide containing pendimethalin that controls grass and broadleaf weeds, improved by water based formulation featuring decreased odor and staining. Same reliable control of grass and broadleaf weeds as other pendimethalin based herbicides.	Prowl® H2O	1.5 - 3 pts/A¹			X	X
PAVILION MTZ	Pendimethalin: 2.9 lb/gal Metribuzin: 1.1 lb/gal	3: Microtubule Assembly Inhibitor 5: Photosynthesis Inhibitor Site A	A combination of two powerful active ingredients, pendimethalin and metribuzin, Pavilion MTZ delivers consistent residual control of a wide spectrum of broadleaf and grass weeds.	Tripzin ZC	31 - 62 oz/A¹			X	X
REVOLT®	Rimsulfuron: 25%	2: ALS Inhibitor	Pre and post-emerge weed control on broadleaf weeds.	Matrix® SG	1 - 1.5 oz/A			X	X
STREVIN™ 2EC	Carfentrazone-ethyl: 2 lb/gal	14: PPO Inhibitor	Versatile tool for preplant burndown, post emergence weed control and preharvest defoliation.	Aim® EC	2 oz/A	X	X		
VANDAL® 4SC	Sulfentrazone: 4 lb/gal	14: PPO Inhibitor	Sulfentrazone based selective herbicide for post-emergent broadleaf weed control especially ALS resistant weeds.	Spartan® 4F	3 - 8 oz/A¹			X	
VISOR® S-MOC HERBICIDE	S-metolachlor: 7.62 lb/gal	15: Very Long Chain Fatty Acid Inhibitor	Metolachlor based herbicide for potatoes. Controls grasses and certain broadleaf weeds.	Dual® Magnum	1 - 2.5 pts/A¹			X	
VISOR® S-MOC II HERBICIDE	S-metolachlor: 7.64 lb/gal Safener	15: Very Long Chain Fatty Acid Inhibitor	Metolachlor based herbicide formulated with built-in safener for potatoes. Controls grasses and certain broadleaf weeds.	Dual® II Magnum	1 - 2.5 pts/A¹			X	
VISOR® II XRT	S-metolachlor: 5.69 lb/gal Safener	15: Very Long Chain Fatty Acid Inhibitor	Selective preplant surface applied, preplant incorporated, or preemergence herbicide for control of most annual grasses and broadleaf weeds in a broad variety of crops. Includes our proprietary technology XRT extended residual technology.	Unique to Innvictis Crop Care	1.3 - 3.3 pts/A¹			X	






PRODUCT	AI	MOA	DESCRIPTION	COMPARABLE PRODUCT	USE RATE
DESSICANTS					
DEVOUR®*	Paraquat: 3 lb/gal	22: Photosystem I Electron Diverter	Non selective, broad spectrum burndown herbicide.	Gramoxone®	0.7 - 1.3 pts/A
FEVER®	Glufosinate: 2.34 lb/gal	10: Glutamine Synthetase Inhibitor	Non-selective herbicide that can be used for burndown or defoliation.	Liberty® Herbicide	21 oz/A
STREVIN™ 2EC	Carfentrazone-ethyl: 2 lb/gal	14: PPO Inhibitor	Versatile tool for preplant burndown, post emergence weed control and preharvest defoliation.	Aim® EC	3.2 - 5.8 oz/A
TERIVATE™	Diquat Dibromide: 2 lb/gal	22: Photosystem I Electron Diverter	All-in-one weed management and desiccant tool for potato production.	Reglone®	1 - 2 pts/A
FUNGICIDES (IN-FURROW)					
TREVO®	Azoxystrobin: 2.08 lb/gal	11: QoI (Strobilurin)	Trevo is an azoxystrobin based broad spectrum fungicide.	Quadris®	0.4 - 0.8 oz/1000 row feet
VAUNT™ XL	Mefenoxam: 4 lb/gal	4: PA (Phenylamides)	Vaunt XL is a high load systemic fungicide to control oomycete diseases. Vaunt XL offers a conveniently lower use rate and can help improve stand, root health, and crop vigor.	Ridomil Gold® SL	0.42 oz/1000 row foot
FUNGICIDES					
ELUVIUM™	Chlorothalonil: 6 lb/gal	M5: Multi-Site contact (chloronitriles)	Eluvium is a foundation protectant fungicide for tough disease like early blight and late blight. It's an important component to an effective resistance management program.	Bravo® Weather Stik	0.75 - 1.5 pt/A
INNLIVEN™ ELITE	Pyraclostrobin: 2.23 lb/gal Difenoconazole: 1.9 lb/gal	11: QoI (Strobilurin) 3: DMI (Triazole)	Dual mode of action fungicide with broad-spectrum disease control. Proprietary premix fungicide unique to Innvictis.	Unique to Innvictis Crop Care	5.5 - 7.7 oz/A
IVC SUPER SIX LIQUID SULFUR	Elemental Sulfur: 6 lb/gal	M 02: Inorganic	IVC Super Six Liquid Sulfur is an elemental sulfur containing product that controls both troublesome diseases and mites. Powdery mildew and rust are no match.	Suffa®	0.3 - 1.3 gal/A
MANCOVO™ 75 WDG	Mancozeb: 75%	M3: Multi-Site contact	Multisite fungicide providing control of damaging diseases like late blight and early blight. Powered by mancozeb, this class M3 fungicide is a great fit for resistance management.	Manzate Pro-Stick	1 - 2 lb/A
OMAVO®	Fluazinam: 4.17 lb/gal	29: Oxidative phosphorylation uncouplers	Omao is a fungicide powered by the active ingredient fluazinam. It's an excellent disease control agent on a broad spectrum of plant diseases including blight. Can be used in an effective IPM program.	Omega® 500F	5.5 - 8 oz/A
OMAVO® ELITE	Fluazinam: 2.11 lb/gal Difenoconazole: 0.92 lb/gal	29: Oxidative phosphorylation uncouplers 3: DMI (Triazole)	Strong acting potato fungicide with dual, proven modes of action. Omao Elite is an excellent tool for controlling white mold.	Orbus™ ESQ	9 - 14.5 oz/A
OVON™ 4.5	Thiophanate-methyl: 4.5 lb/gal	1: MBC (thiophanates)	Protect your crops from disease with Ovon 4.5 fungicide. This broad-spectrum fungicide protects against white mold.	Topsin® 4.5FL	20 - 30 oz/A
OVON™ 70 WSB	Thiophanate-methyl: 70%	1: MBC (thiophanates)	Protect your crops with the potent power of Ovon 70 WSB. This broad-spectrum T-Methyl based fungicide provides systemic control over destructive diseases like white mold.	Topsin® M WSB	1 - 1.5 lbs/A
TREVO®	Azoxystrobin: 2.08 lb/gal	11: QoI (Strobilurin)	Trevo is an azoxystrobin based broad spectrum fungicide.	Quadris®	6 - 20 oz/A
TREVO® DCZ	Azoxystrobin: 1.67 lb/gal Difenoconazole: 1.05 lb/gal	11: QoI (Strobilurin) 3: DMI (Triazole)	Trevo DCZ has multiple modes of action which contribute to a strong IPM strategy. Trevo DCZ can be sprayed on a variety of crops for flexibility. With two effective active ingredients, Trevo DCZ provides preventative and curative properties.	Quadris® Top	8 - 14 oz/A



PRODUCT	AI	MOA	DESCRIPTION	COMPARABLE PRODUCT	USE RATE
TREVO® ELITE	Azoxystrobin: 1.88 lb/gal Difenoconazole: 1.88 lb/gal	11: QoI (Strobilurin) 3: DMI (Triazole)	Trevo Elite is a broad-spectrum product containing two fungicides. It has preventative, systemic, and curative properties and is recommended to control many important plant diseases.	Quadris® Top SBX	7 – 7.5 oz/A
VAUNT™ XL	Mefenoxam: 4 lb/gal	4: PA (Phenylamides)	Vaunt XL is a high load systemic fungicide to control oomycete diseases. Vaunt XL offers a conveniently lower use rate and can help improve stand, root health, and crop vigor.	Ridomil Gold® SL	3.2 oz/A
XUVANCE™	Cyprodinil: 75%	9: AP (Anilino Pyrimidines)	Fungicide containing cyprodinil that offers systemic, long-lasting protection against a wide range of diseases throughout a broad variety of crops. Inhibits leaf penetration and growth of pathogens inside plant tissue.	Vanguard® WG	5.5 – 7 oz/A
XUVIA™	Cyprodinil: 37.5% Fludioxonil: 25%	9: AP (Anilino Pyrimidines) 12: PP (Phenylpyrroles)	Pre-mix containing cyprodinil and fludioxonil that delivers two modes of action against alternaria leaf blight and powdery mildew. Provides long-lasting control on multiple crops through various stages in the pathogen life cycle.	Switch® WG	11 – 14 oz/A
INSECTICIDES (IN-FURROW)					
AVENGER™ MAX*	Bifenthrin: 2 lb/gal Imidacloprid: 1 lb/gal	3A: Pyrethroid 4A: Neonicotinoid	Avenger Max is a proprietary formulation of bifenthrin and imidacloprid, offering dual modes of action for insect control. Containing high loads of active ingredient, Avenger Max can provide optimal performance at low use rates.	Unique to Innvictis Crop Care	12.8 oz/A
NIRVANA® RTU INSECTICIDE*	Bifenthrin: 1.5 lb/gal	3A: Pyrethroid	A pre-formulated, ready-to-use mixture of Nirvana and bifenthrin. This convenient formulation allows users to pour directly into liquid fertilizer solutions and get a uniform mixture of insecticide and fertilizer.	Capture® LFR	12.75 – 25.5 oz/A
PROVOKE™	Imidacloprid: 4 lb/gal	4A: Neonicotinoid	Highly-active systemic insecticide containing imidacloprid for soil and foliar applications for control of piercing and sucking pests.	Nuprid 4F Max	6.5 – 10 oz/A
REVEAL®*	Bifenthrin: 2 lb/gal	3A: Pyrethroid	Bifenthrin-based insecticide for control of piercing and sucking insects and mites.	Brigade® 2EC	19.2 oz/A
REVEAL® ENDURX*	Bifenthrin: 2 lb/gal	3A: Pyrethroid	Outstanding mix of bifenthrin insecticide for control of piercing and sucking insects and mites, plus our Endurx technology which delivers a higher dosage faster by creating more points of contact.	Unique to Innvictis Crop Care	19.2 oz/A
VYPERA™ C-LV*	Oxamyl: 3.77 lb/gal	1A: Carbamates	Oxamyl containing water-soluble liquid insecticide and nematicide for control of labeled above and below-ground pests.	Vydate® C-LV	34 – 68 oz/A
INSECTICIDES (FOLIAR)					
AMAVI™ SC	Abamectin: 0.7 lb/gal	6: Avermectins	Amavi SC is a reliable miticide and insecticide. This abamectin based insecticide controls mite, leaf miner, thrips, and potato psyllid with a wide window of application methods. Suppression of nematodes when chemigated.	Agri-Mek® SC	1.75 – 3.5 oz/A
AVENGER™ MAX*	Bifenthrin: 2 lb/gal Imidacloprid: 1 lb/gal	3A: Pyrethroid 4A: Neonicotinoid	Avenger Max is a proprietary formulation of bifenthrin and imidacloprid, offering dual modes of action for insect control. Containing high loads of active ingredient, Avenger Max can provide optimal performance at low use rates.	Unique to Innvictis Crop Care	2.1 – 6 oz/A
INNOVIXIA™ EC	Indoxacarb: 15.84%	22: Oxadiazines	Innovixia™ EC is a broad spectrum insecticide that's quick acting with long lasting residual. Innovixia EC controls common pests like Cabbage Looper and Colorado potato beetle* and more. Innovixia EC features a differentiated mode of action making it an excellent IPM partner in resistance management programs. *Where CPB populations are known to be difficult to control, the addition of the synergist, piperonyl butoxide (PBO) may be necessary to achieve optimal control.	Steward® EC	4.6 – 11.3 oz/A
LANVEER™ LV*	Methomyl: 2.4 lb/gal	1A: Carbamates	A broad-spectrum insecticide that offers rapid knockdown of piercing and sucking insects and foliage feeders.	Lannate® LV	1½ – 3 pts/A



PRODUCT	AI	MOA	DESCRIPTION	COMPARABLE PRODUCT	USE RATE
NIRVANA® RTU INSECTICIDE*	Bifenthrin: 1.5 lb/gal	3A: Pyrethroid	A pre-formulated, ready-to-use mixture of Nirvana and bifenthrin. This convenient formulation allows users to pour directly into liquid fertilizer solutions and get a uniform mixture of insecticide and fertilizer.	Capture® LFR	2.8 - 8.5 oz/A
PRONEVA™ EC	Hexythiazox: 1 lb/gal	10A: Mite Growth Inhibitor	Highly effective, hexythiazox-based miticide. This EC (emulsifiable concentrate) formula controls two-spotted spider mite species through activity on eggs and immature stages.	Onager®	12 - 24 oz/A
PROVOKE™	Imidacloprid: 4 lb/gal	4A: Neonicitinoid	Highly-active systemic insecticide containing imidacloprid for soil and foliar applications for control of piercing and sucking pests.	Nuprid 4F Max	1.5 oz/A
RAVAGE®*	Lambda-cyhalothrin: 1 lb/gal	3A: Pyrethroid	A broad-spectrum pyrethroid that controls insect and mite pests.	Silencer	192 -384 oz/A
RAVAGE® II*	Lambda-cyhalothrin: 2.19 lb/gal	3A: Pyrethroid	Broad-spectrum control of over 30 piercing and sucking insect species, powered by lambda-cyhalothrin.	Silencer	096 - 192 oz/A
REVEAL®*	Bifenthrin: 2 lb/gal	3A: Pyrethroid	Bifenthrin-based insecticide for control of piercing and sucking insects and mites.	Brigade® 2EC	6.4 oz/A
REVEAL® ENDURX*	Bifenthrin: 2 lb/gal	3A: Pyrethroid	Outstanding mix of bifenthrin insecticide for control of piercing and sucking insects and mites, plus our Endurx technology which delivers a higher dosage faster by creating more points of contact.	Unique to Innvictis Crop Care	6.4 oz/A
VANISH® SC	Bifenazate: 4 lb/gal	20D: Mitochondrial complex. III electron transport inhibitors	Effective knockdown on a variety of mite species.	Banter® SC	16 - 24 oz/A
VERSO™ 70WP	Acetamiprid: 70%	4A: Neonicitinoid	Acetamiprid-based product controls sucking and chewing pests by way of ingestion. Comes in a preferred wettable powder formulation that is rapidly absorbed by plant tissue and provides protection to the entire leaf.	Assail® 70WP	0.6 - 1.7 oz/A
VYPERA™ C-LV*	Oxamyl: 3.77 lb/gal	1A: Carbamates	Oxamyl containing water-soluble liquid insecticide and nematicide for control of labeled above and below-ground pests.	Vydate® C-LV	34 oz/A

PRODUCT	FUNCTIONS	DESCRIPTION	USE RATE
ADJUVANTS			
AD-SORB RST®	Nonionic Surfactant	Ad-Sorb RST is a soil surfactant that enhances water and fumigation infiltration and penetration. Formulated with several key active ingredients, Ad-Sorb RST is formulated to help eliminate moisture surface tension.	0.25 - 1% v/v
 ADVERSARY™	Spreader, Deposition Aid, Penetrant	Adversary is a powerful spreader, deposition aid, and penetrant designed to enhance droplet size while still allowing for optimal spreading and adhesion on the leaf surface.	0.25% v/v
 AVIATOR™	Nonionic Surfactant, Spreader, Sticker, Penetrant, Humectant, Acidifier, Water Conditioning Agent	Aviator is a non-ionic surfactant, water conditioning agent, and acidifier. Aviator enhances coverage, adhesion, and penetration of spray solutions while protecting herbicides from hard water tie-up.	0.25% v/v
 VALKARIE™	Nonionic Surfactant, Spreader, Penetrant, Deposition Aid, Sticker	Valkarie is an NPE free non-ionic surfactant, formulated to improve deposition, spreading, and adhesion of a spray solution. Valkarie is able to soften a leaf's waxy cuticle, leading to increased penetration and movement to the site of action.	0.25% v/v
VENTURI®	Penetrant, Deposition Aid, Nonionic Surfactant	Venturi is a nonionic surfactant and highly refined paraffinic oil, which also includes functioning agents to improve penetration and deposition. Venturi maximizes the activity and effectiveness of soil pesticides.	1% v/v
VERIMAX® AMS	Water Conditioning Agent, Deposition Agent	Verimax AMS is a multi-functional water conditioner and deposition agent for post-emergent herbicide, defoliant, and desiccant sprays. Verimax AMS can contribute to more effective sprayer applications and increase pesticide performance.	0.25 - 0.75% v/v
VIXEN® AC-L	Water Conditioning Agent	Vixen AC-L is a convenient liquid water conditioner and amine compatible formulation. Vixen AC-L increases absorption and translocation and utilizes sequestering agents to condition water.	0.5 - 2 qts/100 gal



FUNGICIDES



YOUR POTATOES DESERVE *ELITE* DISEASE PROTECTION

OMAVO ELITE AND INNLIVEN ELITE TO THE RESCUE

Many factors are important for producing high yields and high quality. Controlling diseases like white mold, early blight, late blight and a host of others can be critical for a successful harvest. Proactive cultural practices are a must, but it is also important to have highly effective fungicides to rely on when the time is right. Innvictis Crop Care® has recently introduced two new powerful potato fungicides to make raising healthy potatoes a little easier. Along with these new disease management tools, the introduction of Inntero™, a brand-new adjuvant technology, ensures the very best efficacy return from your investment.

FUNGICIDE GROUPS: 11, 3

INNLIVEN[™] ELITE

Innliven™ Elite is a dual mode of action fungicide that provides optimal disease control through translaminar and systemic uptake. The combination of preventative and curative activity controls a wide range of crop diseases, including strobilurin resistant Frogeye Leaf Spot. Innliven Elite also improves stress tolerance and promotes plant growth.

- Broad spectrum disease control
- Preventative and Curative activity
- Increased plant health
- Improved abiotic stress tolerance
- Resistance management

Diseases Controlled

Black dot
Brown spot
Early blight
Late blight
Powdery Mildew
Septoria leafspot

Active Ingredients

Pyraclostrobin 23.2%
Difenoconazole 19.8%

FUNGICIDE GROUPS: 3, 29

OMAVO[™] ELITE

Omavo™ Elite is a dual mode of action potato fungicide that protects against white mold, powdery mildew, late blight, and other harmful diseases. By combining 2 powerful active ingredients in one formulation, Omavo Elite protects the entire plant by inhibiting spore germination and the development of infection structures.

- Effective on common potato diseases to aid in enhanced crop performance
- Dual modes of action which aids your overall IPM strategy
- Broad application window allowing for flexibility in disease control strategy

Diseases Controlled

Late Blight
White Mold
Black dot
Brown Spot
Early Blight
Powdery Mildew
Septoria Leafspot

Active Ingredients

Difenoconazole 9.5%
Fluazinam 21.8%

USE RECOMMENDATIONS

OMAVO ELITE

Late blight – 9 oz/A

White mold – 12.5 oz/A

Black dot, brown spot, early blight, powdery mildew, Septoria leaf spot – 12.5 – 14.5 oz/A

INNLIVEN ELITE

Black dot, brown spot, early blight, late blight, powdery mildew, septoria leaf spot – 5.5 – 7.7 oz/A

Make applications based on local disease spectrum and pressure as well as crop susceptibility and length of protection required. Apply prior to disease onset for best preventative protection as well as curative control of any existing disease pressure. Both Omavo Elite and Innliven Elite provide broad spectrum disease control.

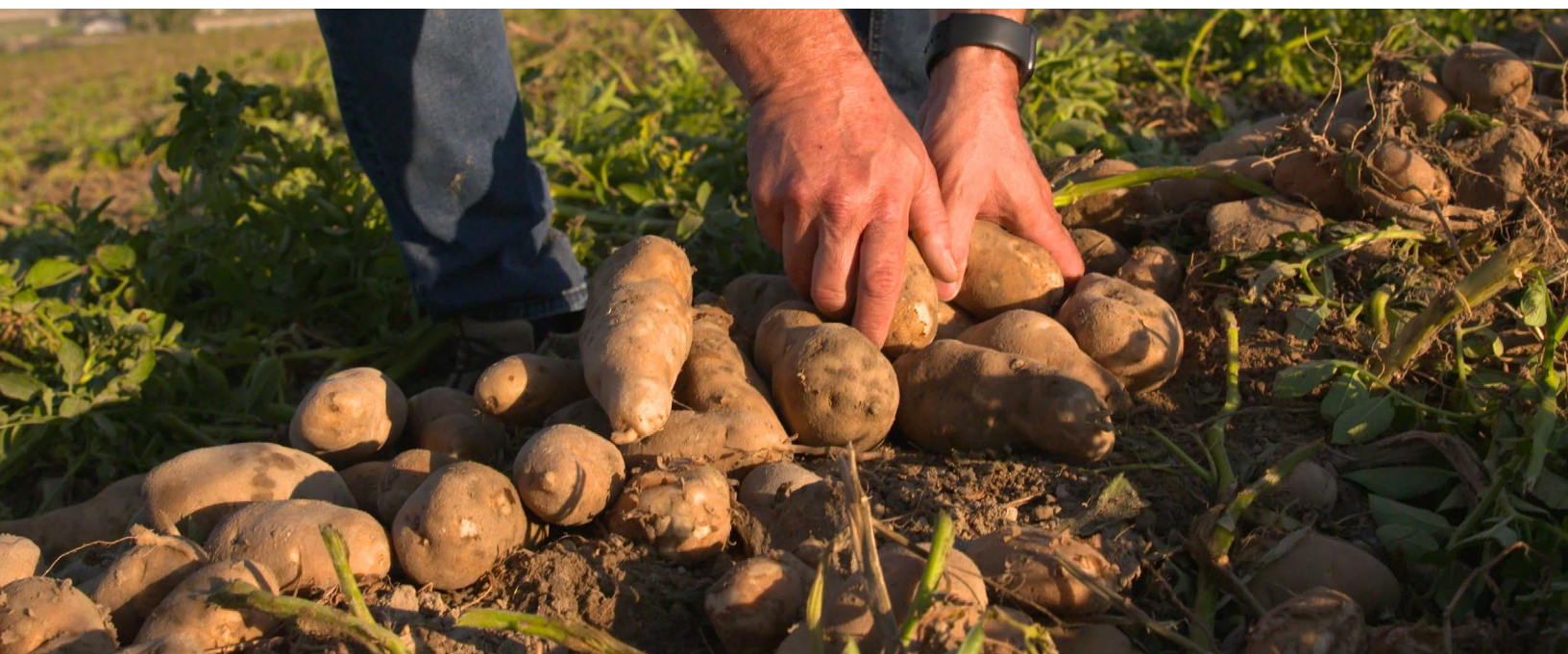
- Where white mold is the driver, Omavo Elite is the better choice.
- Under stressful growing conditions such as drought or heat stress, Innliven Elite provides additional plant health benefits to help with abiotic stress.

ADJUVANT RECOMMENDATIONS

To maximize the performance of your fungicide application, it's important to use the best adjuvant to spread the product evenly on foliage and provide penetration into the leaf. The brand new Inntero adjuvant technology provides superior wetting, spreading and penetration with the highest level of crop safety.

We recommend using Valkarie. It is an excellent non-ionic surfactant, penetrant, spreader, deposition aid and sticker.

Use rate: 0.25 % v/v or 1 qt/100 gal





HERBICIDE/DESICCANT



GROWING POTATOES IS TOUGH, KILLING THEM CAN BE JUST AS HARD

You have a lot invested in your potato crop. From providing the optimal fertility and cultural practices to protecting from yield robbing insects, weeds and diseases, it can add up to a big investment. When you are finally ready for harvest to capture the results of all that work, it is important to have the right program to desiccate vines, kill any weeds, and prepare the crop for a successful harvest.

Innvictis Crop Care® has just made that task a little easier. The introduction of Terivate™ and Strevin™ 2EC, along with our new Inntero™ adjuvant technology, makes building an effective vine desiccation program straightforward.

HERBICIDE GROUP: 14



Strevin™ 2EC is a low use rate broadleaf contact herbicide. Strevin 2EC quickly controls many weeds like pigweed, lambsquarters, kochia and Russian thistle. Strevin 2EC is an excellent means of desiccating crops to aid in harvest operations.

Active Ingredient	APPLICATION
Carfentrazone	
Formulation	Ground
2.0 lbs ai/gal	20 gpa
Rate	Air
3.2 oz/A alone	5-10 gpa
Tank Mix	REI - 12 hrs
2.0-5.58 oz/A	

HERBICIDE GROUP: 22



Terivate™ is a preharvest, contact herbicide used to control late-season weeds while desiccating existing crop foliage. This combination allows for improved harvestability and grain quality.

Active Ingredient	APPLICATION
Diquat-dibromide	
Formulation	Ground: 20 gpa
2.0 lbs ai/gal	Air: 5 gpa
Rate	REI - 24 hrs
1-2 pts/A	

USE RECOMMENDATIONS

When potato crop begins to senesce, make desiccant application providing thorough coverage to all foliage.

TERIVATE

Apply 1-2 pts/A to burndown foliage prior to harvest. For best results, apply 1 pt/A followed by another 1 pt/A (minimum 5 day interval)

STREVIN 2EC

Apply Strevin 2EC at 3.2 – 5.8 oz/A to burndown foliage prior to harvest.

Tank-mixing – Apply Terivate at 1 pt/A and Strevin 2EC at 2.0 – 5.8 oz /A

- Devour®* (paraquat dichloride 3.0 lbs ai/gal) – **Fresh market potatoes only**
- For quick vine kill apply 1.3 pts/A
- For dense vines, apply 0.6 pts/A followed 5 days or more after with another 0.6 pts/A

* = Restricted Use Pesticide

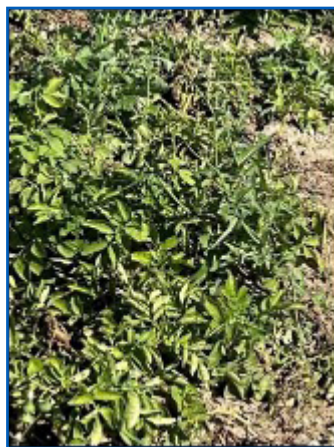
ADJUVANT RECOMMENDATIONS

For best results use Aviator at 0.25% v/v or 1 qt/100 gal. This will provide spreading and penetration of the defoliant as well as superior water conditioning and acidification to enhance the burndown.

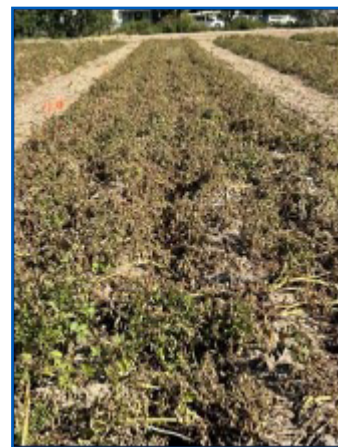
For added deposition and drift reduction use Adversary at 0.25% v/v or 1 qt/100 gal

Potato Vine Desiccation Trial

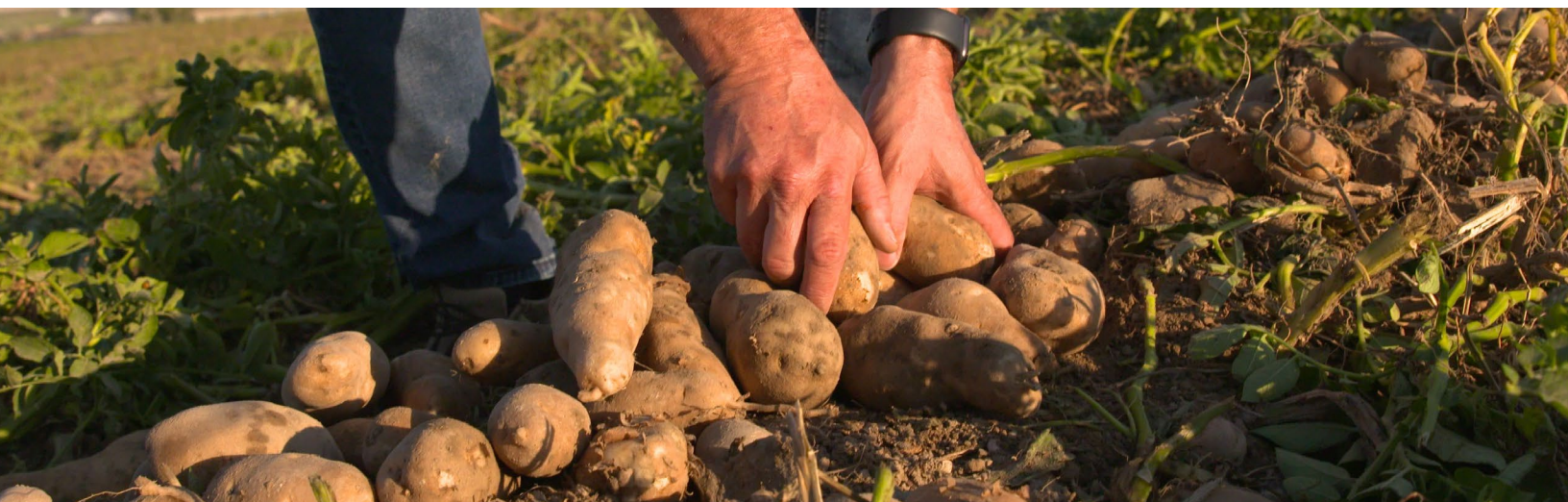
Twin Falls, Idaho 2023 | 3 Days after Treatment



Non-Treated



Diquat-Dibromide + Aviator





FIELD MARKET UPDATE COLUMBIA PLATEAU

UPCOMING MARKET

Growers are starting to plant potatoes. One of the most critical parts of growing a great crop is keeping weeds from robbing water and nutrients at critical growth periods. As a trusted advisor for your growers, it's your job to provide the best program to start the season weed-free and keep it that way through the growing season.

Luckily, you have several highly effective Innvictis products to build an effective program.

PRODUCT RECOMMENDATIONS



Proven actives for broadleaf and grass weed control combined with the extended residual technology to keep the product in the weed germination zone longer.

USE RATES

PRE-EMERGENCE TO POTATOES

1.5 to 4.0 pt/A

Depending on soil type and soil pH

COLUMBIA PLATEAU RECOMMENDATION:

2.0 – 3.0 pt/A has shown very good results

POST-EMERGENT TO POTATOES

Through Center Pivot Sprinkler Only

1.5 to 3.1 pt/A

Depending on soil type



For added residual control and enhanced efficacy on tough to control weeds add **Derive 75DF Herbicide**.

Add enough Derive 75DF to equal 0.50 lb ai of metribuzin for the tank mixture.



To broaden weed spectrum, add **Revolt Herbicide**.

For best results make two applications.

Apply the first application at 1.5 oz/A with the Galvan XRT/Derive 75DF application. Make a second application of 1.0 oz/A 14-28 days later to control later weed flushes.



To make your herbicides perform to their highest potential, use a high-quality targeted adjuvant.

Venturi is a superior choice to ensure soil herbicides remain in the weed germination zone.

Add Venturi to the tank mixture at 4-8 pt/100 gallons.

COLUMBIA PLATEAU RECOMMENDATION: 12 – 24 fl. oz/A

SALES RESOURCES

Click to View



Galvan XRT Sales Sheet



Derive 75 Sales Sheet



Revolt Sales Sheet



Venturi Sales Sheet



FIELD MARKET UPDATE MOUNTAIN WEST

UPCOMING MARKET

Have you experienced weed escapes from your pre-emergent herbicide programs? Have you used strong chemistries but still see weeds germinating? I have had those uncomfortable discussions with growers. They did not cut corners in their herbicide program but are disappointed in their results.

No matter how strong your soil herbicide program is, if the product gets pushed too deep in the soil you can experience poor results. For unpredictable spring rains, and at times an unpredictable irrigator applying too much water, **there is a solution: Venturi.**

Venturi has a copolymer resin that (when used at the correct rate) helps ensure your chemistries stay in the effective soil profile to kill weeds. Not only that, but Venturi also extends the residual activity for potentially 7-10 days.

I have seen the results myself. In a sandy potato field where we had weed escapes the previous season, I added Venturi to the tank at 12fl oz/acre. The field stayed clean and the grower was pleased.

PRODUCT RECOMMENDATION



Venturi is a superior choice to ensure soil herbicides remain in the weed germination zone. The copolymer resin in Venturi helps keep your chemicals in the top 1/2 to 1 inch of the soil profile. It also extends the residual activity of your product for potentially 7-10 days.

MOUNTAIN WEST RECOMMENDATION

Add Venturi to the tank mixture at 12 -24 fl. oz/A

Stay in the upper rate range in more extreme conditions or in fields where you have traditionally experienced weed escapes.

*The most effective way to kill germinating weeds is through shoot uptake. So, if you hold your chemicals in the top of the soil profile it will be more effective. As you push your products deeper in the soil they can still be effective through root uptake, but not as effective. Roots have an endodermis and a cuticle protecting them unlike the shoots.



SALES RESOURCES

Click to View



Venturi Sales Sheet



2024 POTATO EARLY POSTEMERGENCE PROGRAM

Simplot Grower Solutions has the personnel, equipment, products, and expertise to help protect your crop and maximize yield potential. The early season postemergence recommendations below combine the best pesticide applications and deliver critical nutrition to increase early season growth and vigor by protecting the seedling against both abiotic stresses and pests necessary to drive yield.



2.2 pints/A

Visor® II XRT is a selective herbicide for use as a pre-plant surface applied, pre-plant incorporated, pre-emergence, or post-emerge treatment for control of most annual grasses and certain broadleaf weeds in a broad variety of crops. The XRT platform delivers performance that rivals equivalent branded products, generally increasing efficacy by 7 to 10 days.



1.5 oz/A

Revolt™ herbicide offers contact and post-emergent control of grasses, and broadleaf weeds, including glyphosate-resistant marestail and fleabane in citrus, grapes, pome fruit, tree nuts, and potatoes. Revolt is an excellent tank mix partner with other labeled products offering contact activity to help broaden the weed control spectrum.



0.25% v/v or 1 qt/100 gallons

Valkarie™ is an NPE free non-ionic surfactant, formulated to improve deposition, spreading, and adhesion of a spray solution. Valkarie is able to soften a leaf's waxy cuticle, leading to increased penetration and movement to the site of action.



1 - 4 qts/A

TetRx® is an innovative, complete nutritional package backed by Innvictis BioScience's VaRx Technology. The VaRx Technology promotes root development and growth, nutrient absorption, and helps mitigate stresses. Another unique and key component of the TetRx formulation, is in its ability to help solubilize applied nutrients or nutrients in the soil, helping to increase their availability and uptake.



2 oz/A

MavRx® is an innovative and unique blend of plant growth regulators backed by Innvictis BioScience's VaRx Technology. IBA and kinetin are plant growth regulators that promote root development, growth, and proliferation, as well as increase vegetative growth. The VaRx technology also stimulates root and shoot growth, improves nutrient absorption, and helps mitigate environmental or herbicide stresses.

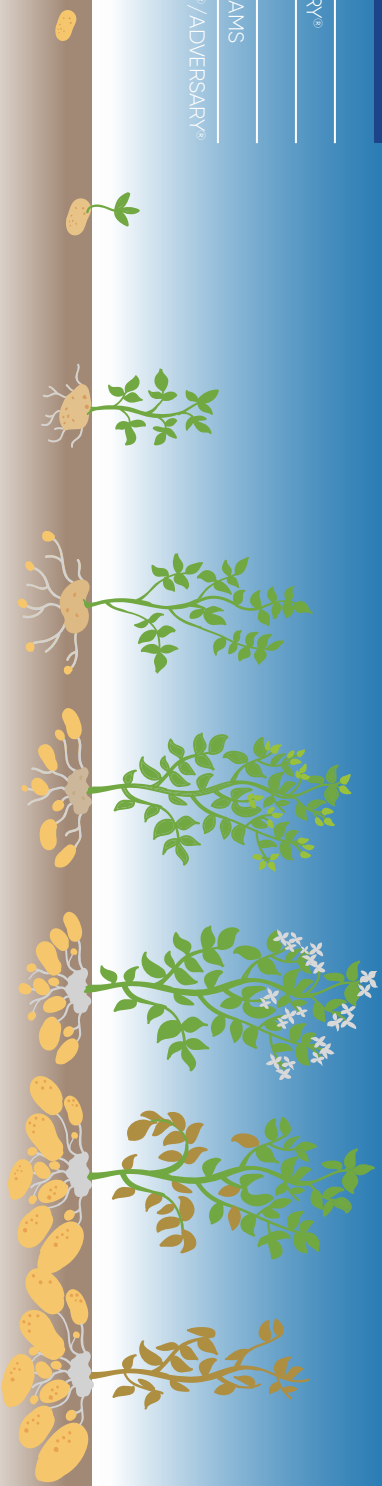


POTATO PORTFOLIO



ADJUVANT SELECTION

WEAK ACIDS	AVIATOR®
DRIFT REDUCTION	ADVERSARY®
PRE-EMERGENT	VENTURI®
NUTRIENT UPTAKE	VERIMAX® AMS
FUNGICIDE/INSECTICIDE	WALKARIE®/ADVERSARY®



PREPLANT	PLANTING	EMERGENCE	ROSETTE	TUBER INITIATION	EARLY TUBER BULKING	TUBER BULKING	LATE TUBER BULKING	SENESCENCE/ DESICCATION
DEVOUR®		DERIVE® 4L			LANVEER™ LV			FEVER™
	VARSTITY®	GALVAN® XRT			RAVAGE® II			DEVOUR®
	ENVY™	PAVILION™			PROVOKE™			TERIVATE™
	PROVOKE™	VANDAL® S-MOC XRT				PRONEVA™ EC		STREVIN™ 2EC
			REVOLT™				VICTIMITE®	
				AVENGER™ MAX	INNVOXIA™ EC			
				NIRVANA® RTU				
				REVEAL® OR REVEAL ENDURX®				
				VERSO™ 70WP				
				VYPERA™ C-LV				
				OMAVO™ ELITE				
				TREVO® FUNGICIDE				
				VAUNT™ XL				
					TREVO® ELITE			
					ELUVIUM™			
					MANCOVO™			
					INNLIVEN™ ELITE			
					OVON™ 70 WSB OR OVON™ 4.5			

