



COVVEILA™

A DIFFERENT APPROACH TO AGRICULTURE

Covveila™ is a distinct blend of components, formulated to help minimize the adverse effects of sunburn, heat stress, and cooler temperatures. Covveila creates a layer on the leaf surface, diffracting the sun's rays, helping keep plants cooler under higher temperatures and extreme solar units that accumulate during the summer months.

BENEFITS

- Creates a layer on the leaf surface
- Diffracts the sun's rays
- Helps reduce canopy temperatures

APPLICATION

- Apply prior to heat event and repeat every 12 to 21 days
- Apply early morning or late evening
- Early to mid-winter when above freezing and dry weather is expected for 48 to 72 hours after application
- Do **NOT** add surfactants to dormant applications

RATES

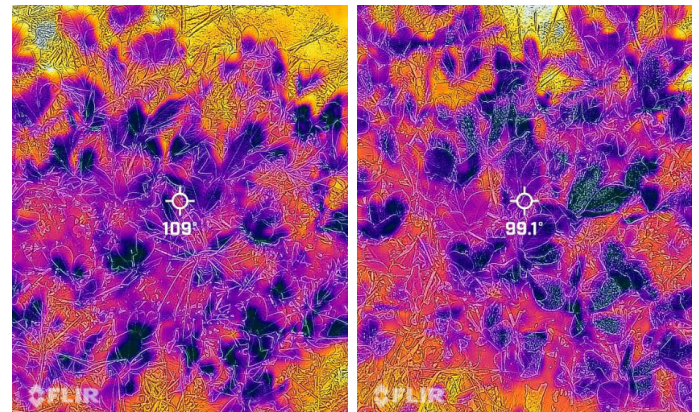
- **In season applications:** 2 to 4 gallons
- **Post season applications:** 4 to 6 gallons for early to mid-winter

CROPS

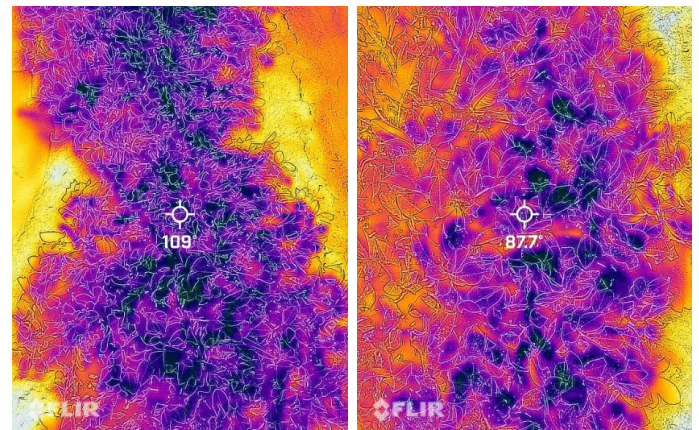
- Vegetable crops
- Row crops
- Vine crops
- Tree nuts and fruit

FLIR CAMERA IMAGERY

7/20/2023 - Klondike TX



8/2/23 - Lamesa TX



VEGETATIVE TEMPERATURES

