



## Celebrate the Dark

- ✓ Dark green genetic color
- ✓ Fine leaf texture and great turf quality



**JACKLIN.**  
S E E D  
by **Simplot**

Toll Free: 1-800-688-SEED  
Fax: 1-509-319-3181  
www.jacklin.com  
E-mail: info@jacklin.com

### The new standard for dark genetic color—even darker than T-1!

#### Characteristics:

Celebrate the dark with new Nightlife creeping bentgrass (*Agrostis stolonifera*), our highest rated bentgrass for color. Nightlife creeping bentgrass has finely textured blades and excellent turf quality. Its dramatic dark green color—just a shade darker than T-1—makes it an excellent choice to provide contrast on tees, greens, or fairways.

#### Origin and Development:

Nightlife was developed from selections of T-1 creeping bentgrass which were crossed with germplasm collected over many years from golf course greens throughout the United States. All of the lines used to develop Nightlife were screened in Jacklin Seed's "spot plot" *Poa annua* putting green for aggressiveness against *Poa*. The result is an extremely playable bentgrass with a deep blue-green color reminiscent of T-1, a slightly finer texture, and excellent aggressiveness against *Poa annua*.

#### Adaptation:

Nightlife is suited for use on greens, tees, approaches, and fairways. It thrives across the cool, temperate regions of the world, and it is adapted well into the transition zone between warm and cool-season areas.

#### Seeding Rate:

New Seeding: 1-2 lbs. per 1000 ft<sup>2</sup> (5-10 g/m<sup>2</sup>)  
Interseeding: 2-4 lbs. per 1000 ft<sup>2</sup> (10-20 g/m<sup>2</sup>)



Scan for more information  
on Jacklin bentgrasses

**JACKLIN.**  
Genetics *Inside*



## Celebrate the Dark

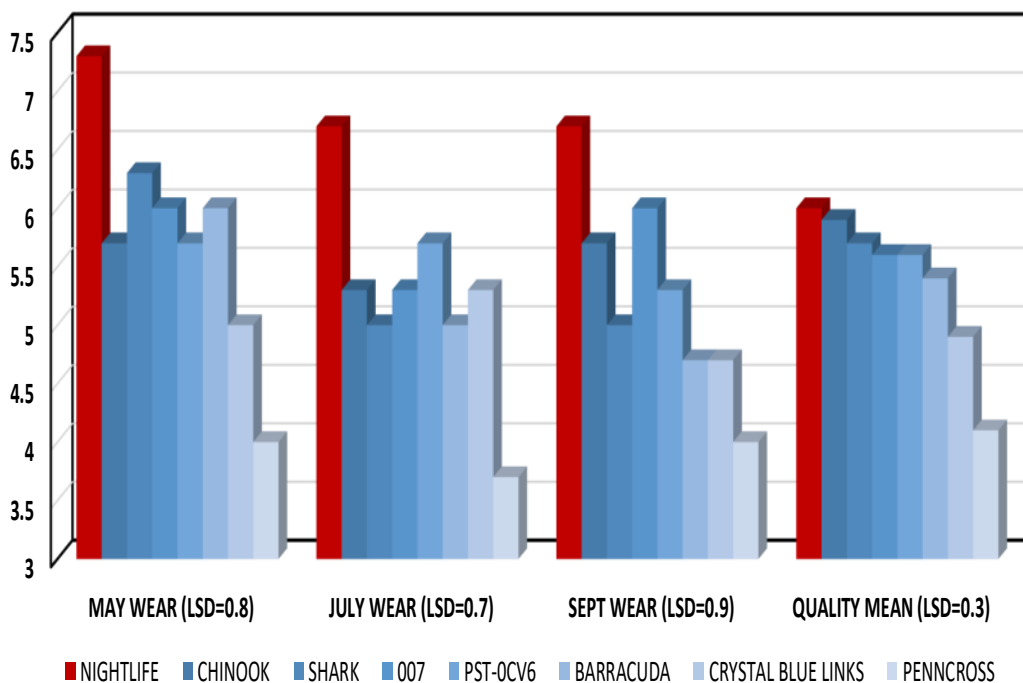


Above: Nightlife next to Pennncross at the 2014 fairway/tee maintenance trial in Pullman, Washington.

Below: Mean turfgrass quality and other ratings of creeping bentgrass cultivars grown on a fairway or tee under traffic stress at Amherst, MA.

T-1 (top) set the bar for dark genetic color. Nightlife, below, is very similar in color to T-1, but a shade darker. It performs beautifully alone or blends well for interseeding into T-1 greens, fairways, tees or approaches. Celebrate the dark!

**JACKLIN**  
S E E D  
by **Simplot**



Toll Free: 1-800-688-SEED  
Fax: 1-509-319-3181  
www.jacklin.com  
E-mail: info@jacklin.com